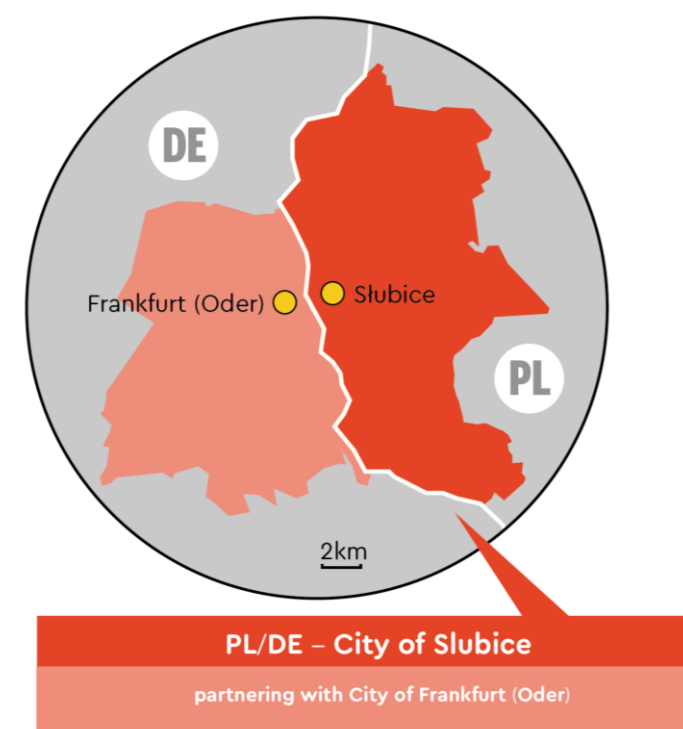


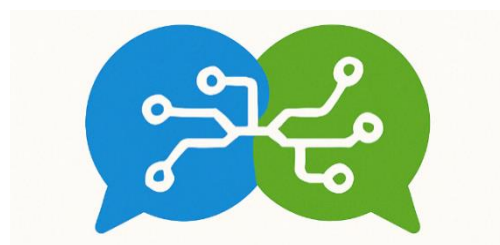
# Cross-AI Connect: Strengthening Border Resilience



## GERMANY / POLAND

## PARTNERS

Slubice &  
Frankfurt (Oder)



## OBJECTIVES

- ❖ Identify operational gaps and needs arising from differences between Polish and German crisis-management systems.
- ❖ Assess acceptance and trust in AI among crisis-management personnel.
- ❖ Test AI-supported tools—especially automatic translation and natural language processing (NLP)—to facilitate real-time information exchange.
- ❖ Analyze the legal and ethical framework governing AI use in public administration.

## RESULTS

- ✓ AI improved cross-border communication
- ✓ Readiness for AI use increased
- ✓ Legal and ethical framework clarified
- ✓ Security and coordination models developed
- ✓ Replicable good practices created

## KEY LESSONS

- AI can enhance crisis management efficiency
- Trust and legal harmonisation are as important as technology
- AI tools work best when tested in real cross-border settings
- Institutional learning and regular communication reduce barriers
- Cross-border resilience requires a functional-area perspective

